

# **HOME-BASED HEALTH CARE RISKS**

**Michael Hodgson, MD, MPH  
Chief Consultant, Occupational  
Health, Safety, and Prevention  
Veterans Health Administration**

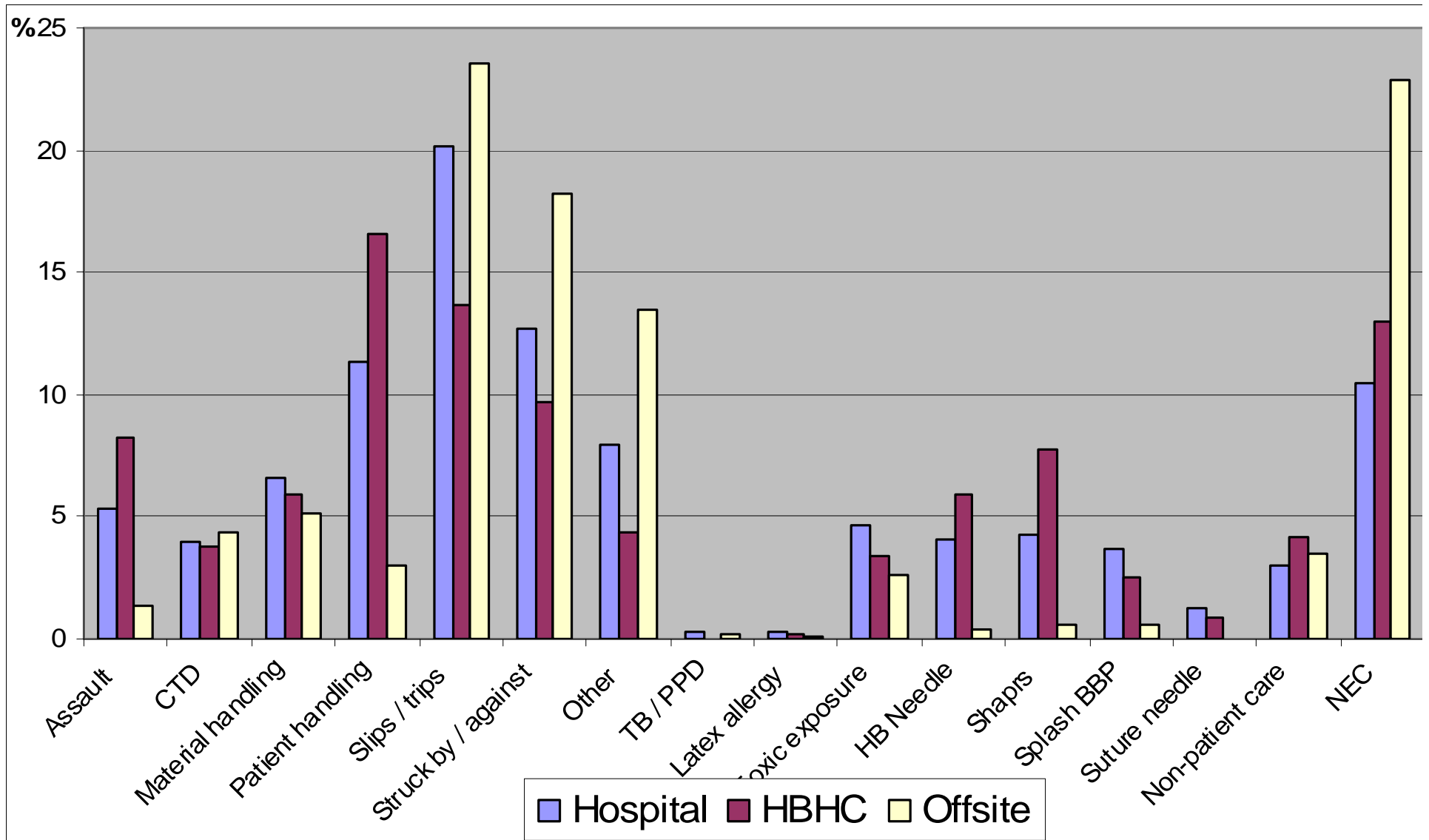
# VHA AS A SYSTEM

- VHA - Structure
  - 153 medical centers
  - 909 CBOCs
  - 135 nursing homes
  - 47 residential rehab facilities
  - 108 comprehensive home-care programs
- Employees
  - 240,000 total
  - 75,000 nursing
  - 13,000 MD
- VHA – Governance and Operations
  - USH / DUSH
  - DUSHOM – operations
    - 21 VISNS
    - Clinical operations
    - Safety
    - Engineering
  - CO – policy offices
    - Patient Care Services
    - Quality and Performance
    - Policy and Planning
    - Public Health and Environmental Hazards
    - etc

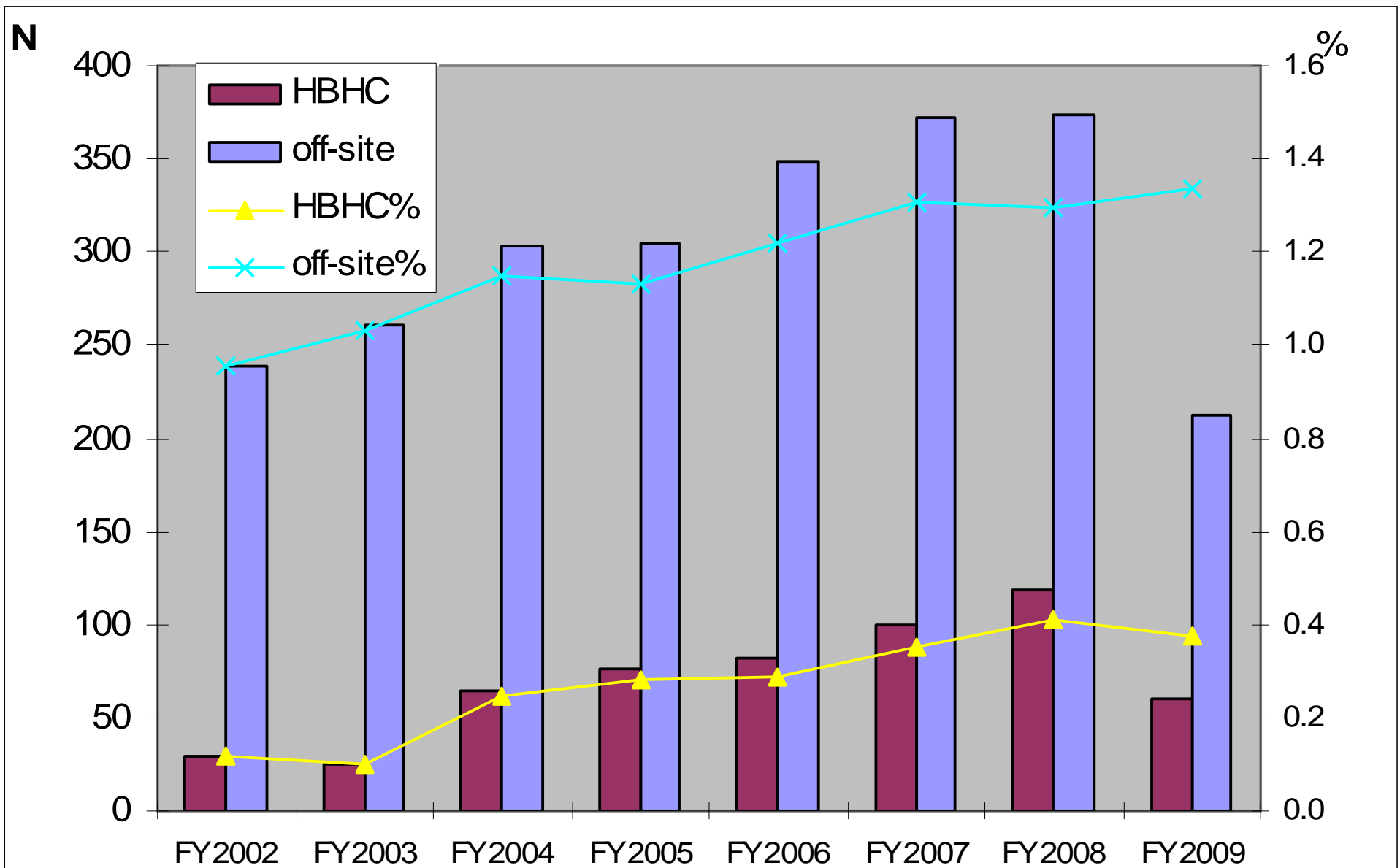
# METHODS ISSUES

- **FECA RULES**
  - **Compensable vs non-compensable**
- **OSHA recordability**
  - **Intrinsic to job**
- **VA Policy: 2162**
  - **Supervisor's report: text description**
    - (How do we record dog bites)
  - **Threshold**
  - **Data system issues: location versus service**

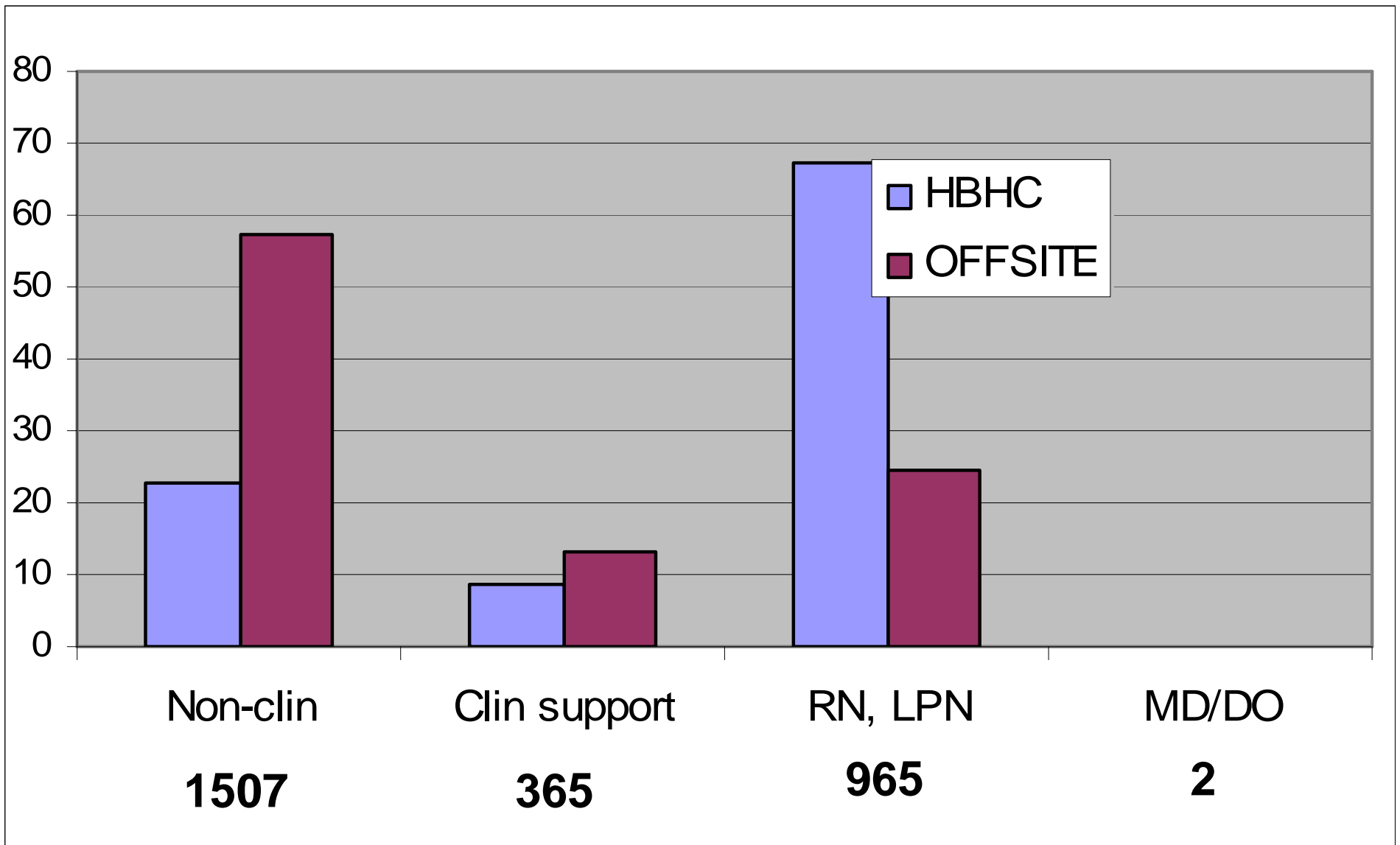
# INJURIES: HOME-BASED HEALTH CARE, OFF-SITE, AND HOSPITAL ACTIVITIES



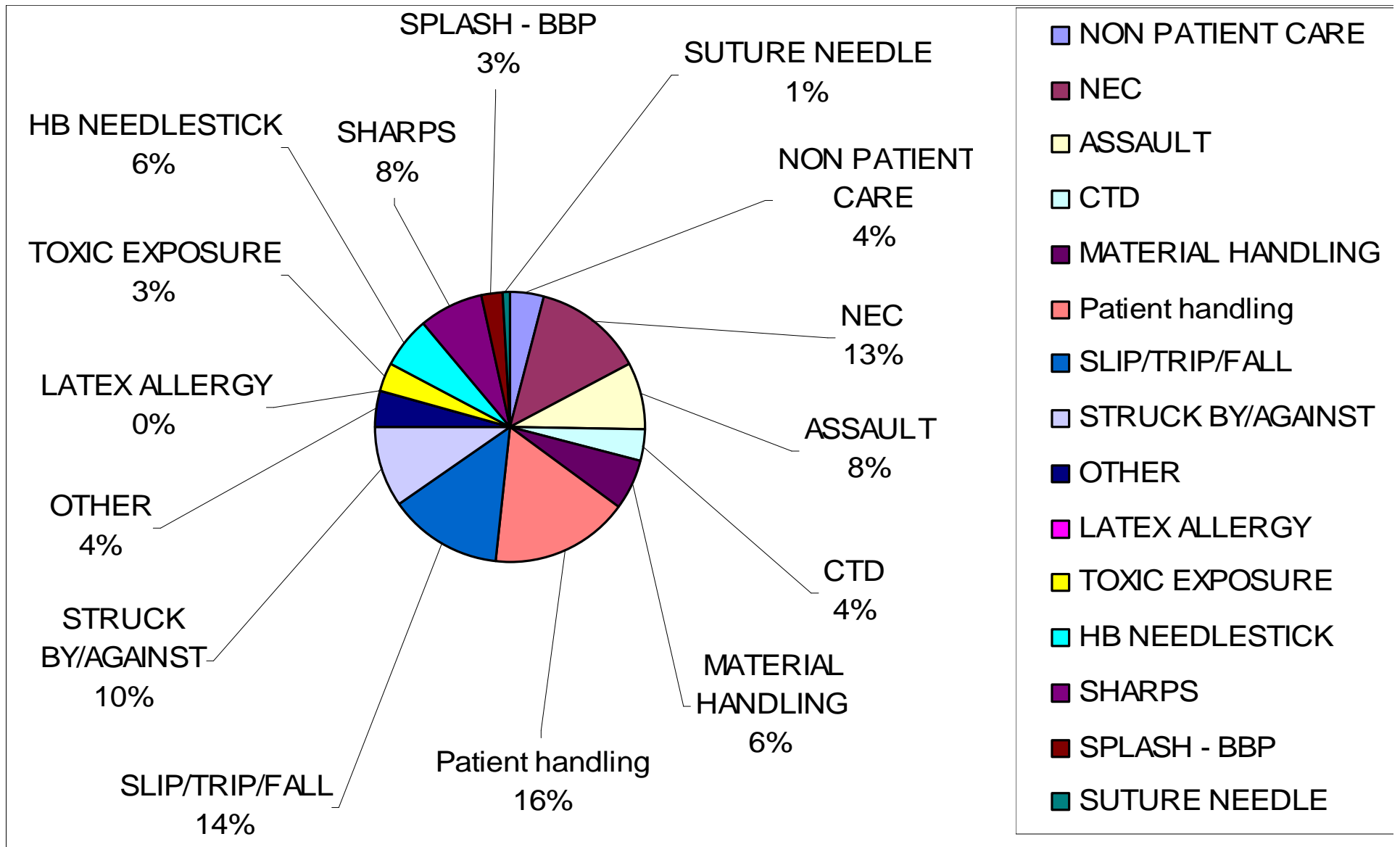
# HOME-BASED HEALTH CARE AND OFF-SITE INJURIES 2002-2009



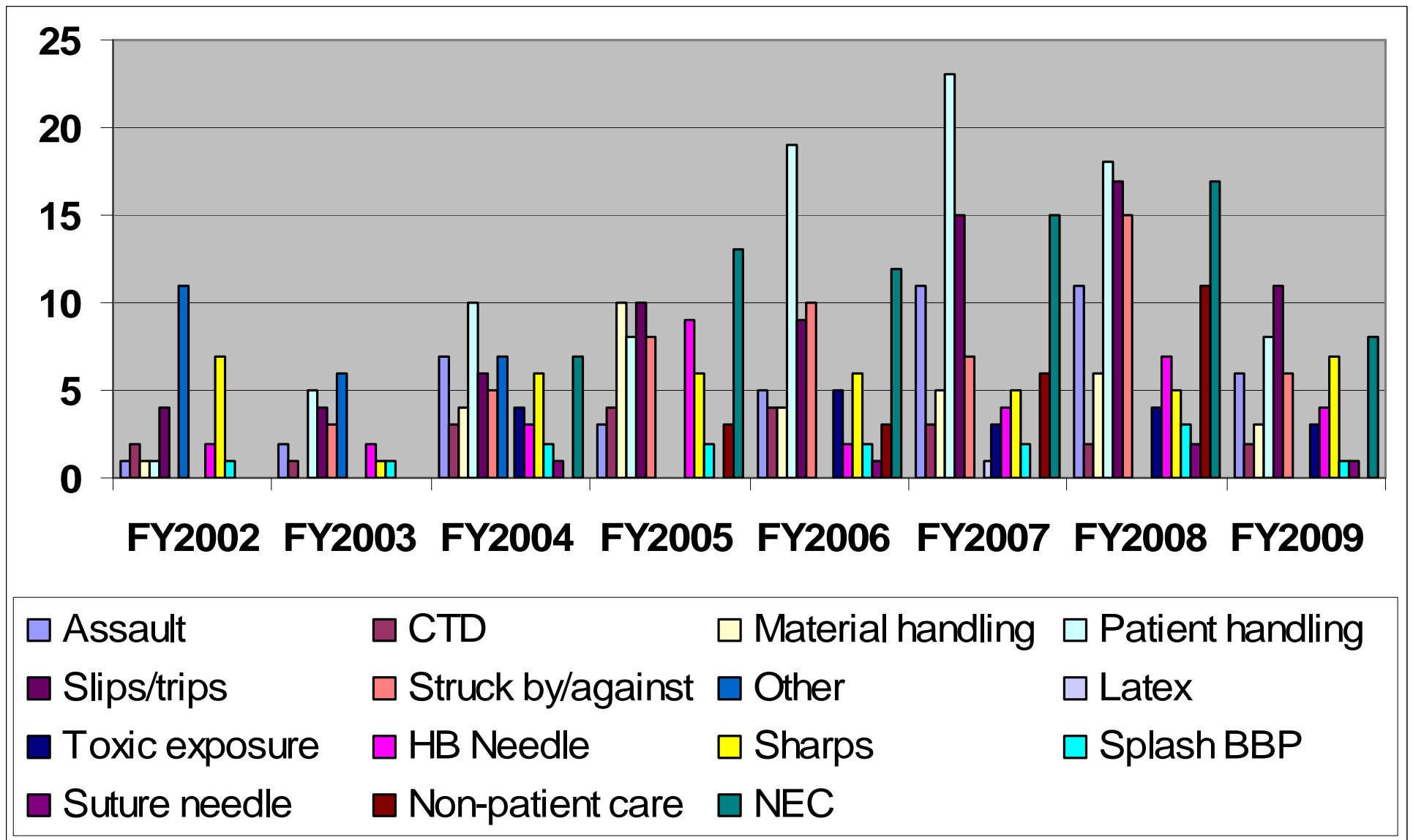
# WHO GETS INJURED



# INJURIES IN HOME-BASED HEALTH CARE



# HOME-BASED HEALTH CARE INJURIES 2002-2009



# HAZARDS AT HOME

- Assaults
- Manual handling injuries
- Sharps

# ASSAULT HAZARDS

- Patient risk assessment
- Trip planning and preparation
- Trip hazard triggers
- Reporting

# ASSAULTS - PATIENT ASSESSMENT

- Prior assault
- Mental illness and
  - Substance abuse
  - TBI
  - PTSD
- Explosive personality disorder

# ASSAULTS – TRIP PLANNING

- Local Emergency Numbers
- Cell phone / emergency call
- Mapquest routes to emergency / hospitals
- Written schedule / notification

# ASSAULTS - TRIP

- Trip: parking
  - Driver door unlocked
  - Escape routes / blockages
  - Car key access
- House entry
  - Obstacles, exits, telephones
  - Other residents
- When things go wrong
  - Stay calm
  - Don't lie or make excuses
  - Trust your gut
  - Appeal to joint interests
  - Offer logical solution
- Leaving
  - Make excuses and leave
  - Call for help (cell phone)
  - Lock door before starting
  - Head for the police
- Reporting
  - Police
  - VA Police
  - Clinical

# MANUAL HANDLING

- Space and equipment
  - Smaller rooms
  - Equipment maintenance, slings, and batteries
- Process
  - Transfer algorithms and training
  - Family support and training
- Support and peer safety leader issues
  - After action reviews