



Two HHMI Diversity Programs

Peter Bruns

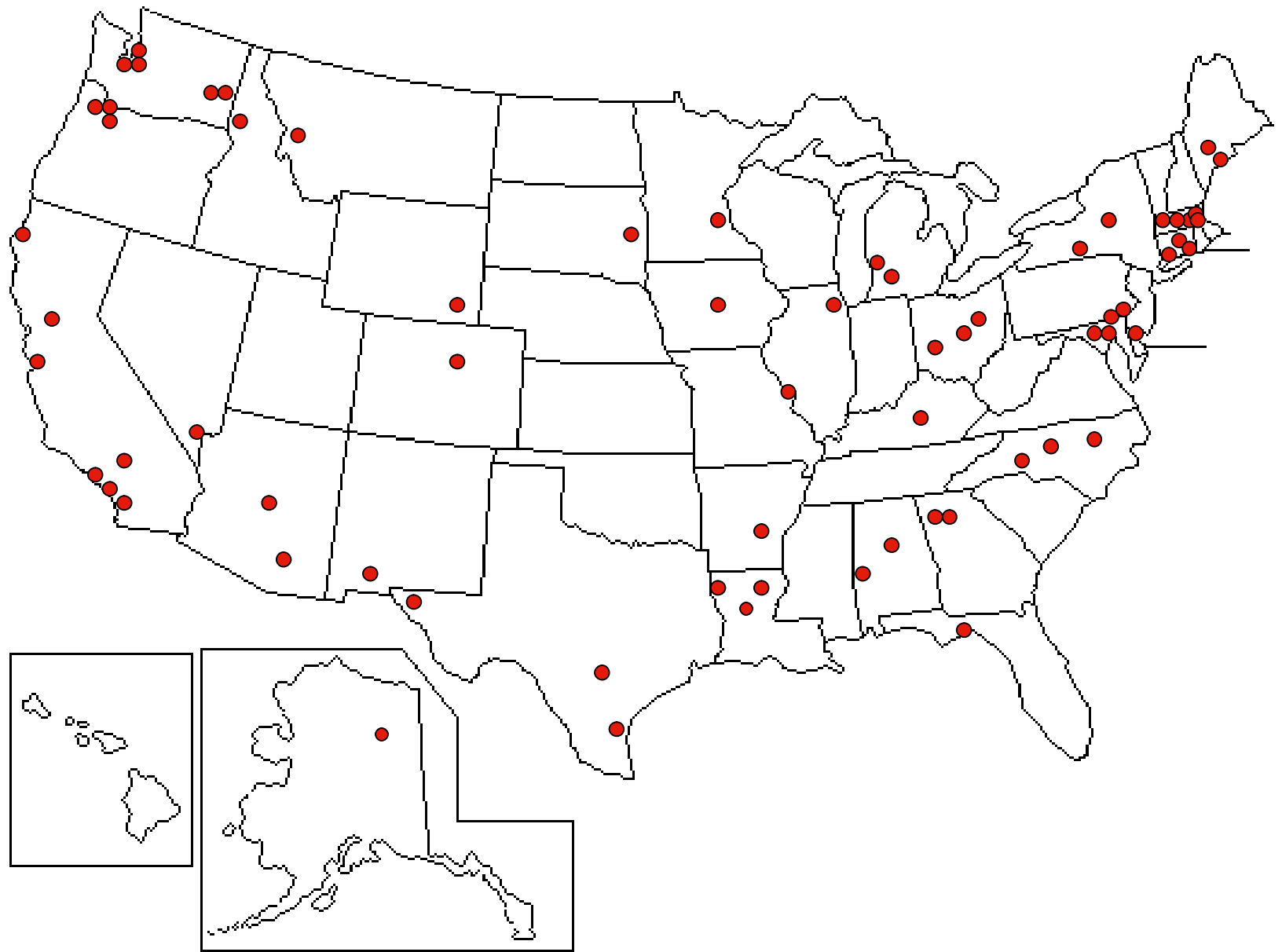
Vice President for Grants and Special
Programs

Howard Hughes Medical Institute



Diversity Symposia

- § Three locations, 76 institutions
- § Funded by HHMI, NIH, Harvard, LSU Monroe, U. Washington
- § Participants: Faculty, Senior Administrators
- § Data required to attend 4th





Data Collection

- § Three academic years
- § 25 universities; 25 colleges
- § Gender
- § Race
- § Graduating majors, GPAs
- § Gateway courses



Gateway Courses

- § Biology, Chemistry
- § Three semesters
- § Enrollments
- § Withdrawals
- § Grades



Data Will

- § Provide national benchmarks
 - ÿ Race, gender, type of school, course
- § Identify problem areas
 - ÿ Identify when students drop out
- § Correlate programs with outcomes to identify solutions
- § Initial report by this summer



Data Committee

- § David Brodigan, Data Consultant
- § Peter Bruns, Howard Hughes Medical Institute
- § Patsy Dickinson, Bowdoin College
- § Wendy Raymond, Williams College
- § Michael Summers, University of Maryland
Baltimore County
- § Michael Weir, Wesleyan University



Early Findings

- § URM students drop out early
- § Early intervention programs effective
 - ÿ Summer bridge, peer mentoring, peer leadership, coaching for social aspects, study groups, early research opportunities
 - ÿ Faculty mentoring



<http://www.williams.edu/biology/divsciences/>

<http://www.hhmi.org/resources/diversity/>

Exceptional Research Opportunities





EXROP Students

- § Chosen by HHMI grantee
- § Do research in an HHMI lab
- § Receive continued mentoring and networking
 - ÿ Summer meetings
- § Eligible for predoctoral fellowships



EXROP

Talent Scouts

Great Labs

Mentoring
Networking

\$\$
Networking
Mentoring
Mentoring
Mentoring

Gilliam
Fellowships



EXROP Cost per Student

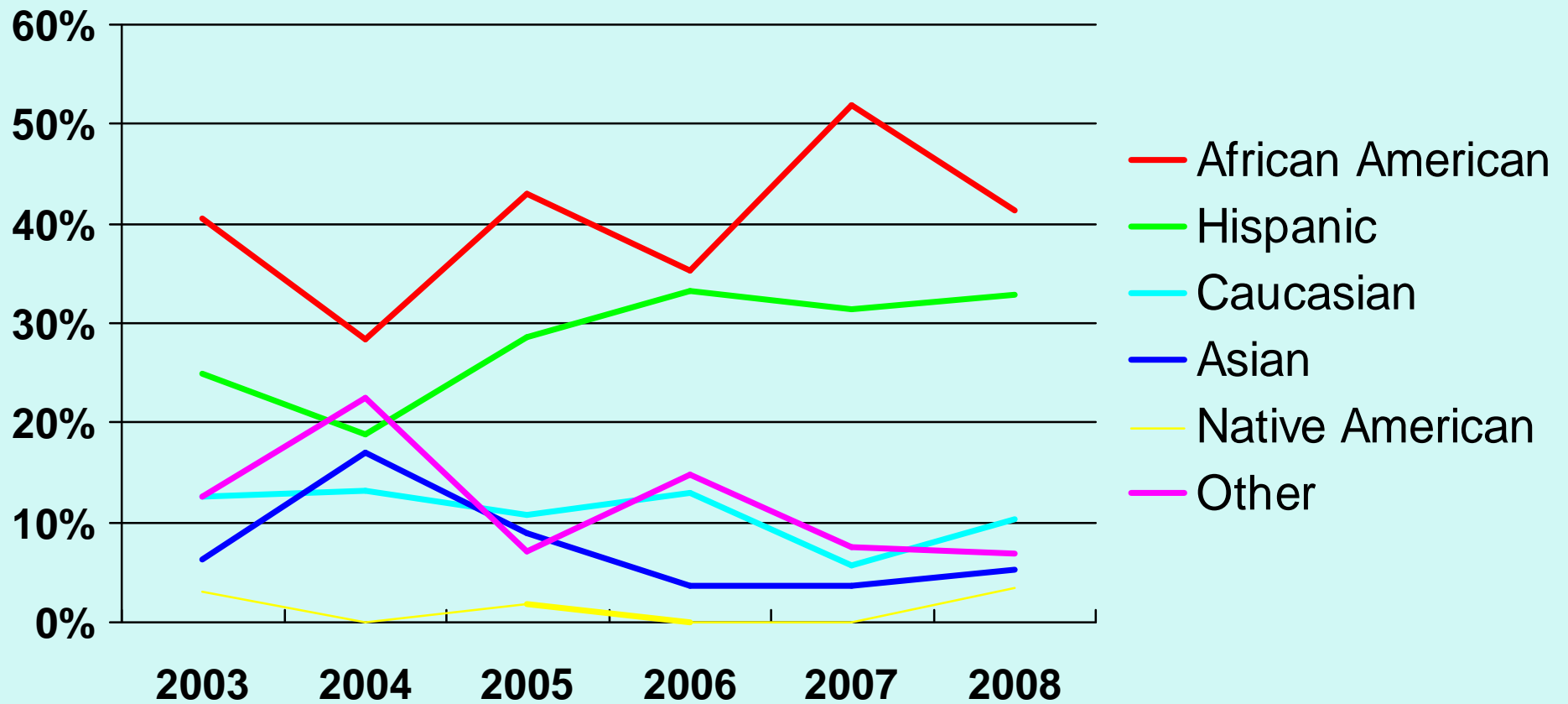
- § \$ 4,500 stipend
- § \$ 500 travel
- § \$ 2,000 housing
- § \$ 7,000 Total
- § Currently ~ 60 students/year

Gilliam Cost per Student

- § Five-year award
 - \$ 27,000 stipend
 - \$ 3,500 fellow's allowance
 - \$ 13,500 institutional allowance
 - \$ 44,000 Total
- § Up to five new awards per year
- § 25 fellows at steady state (\$1.1M)

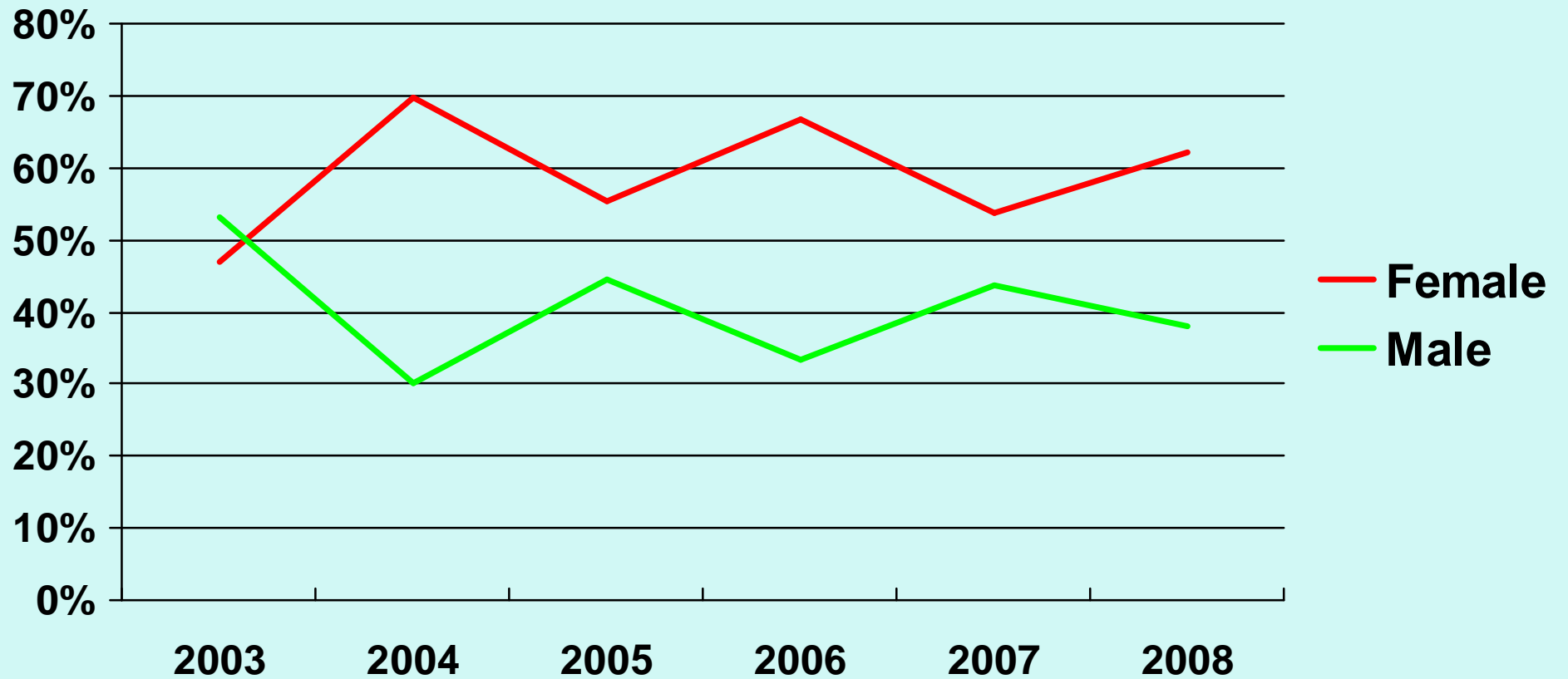


Ethnicity



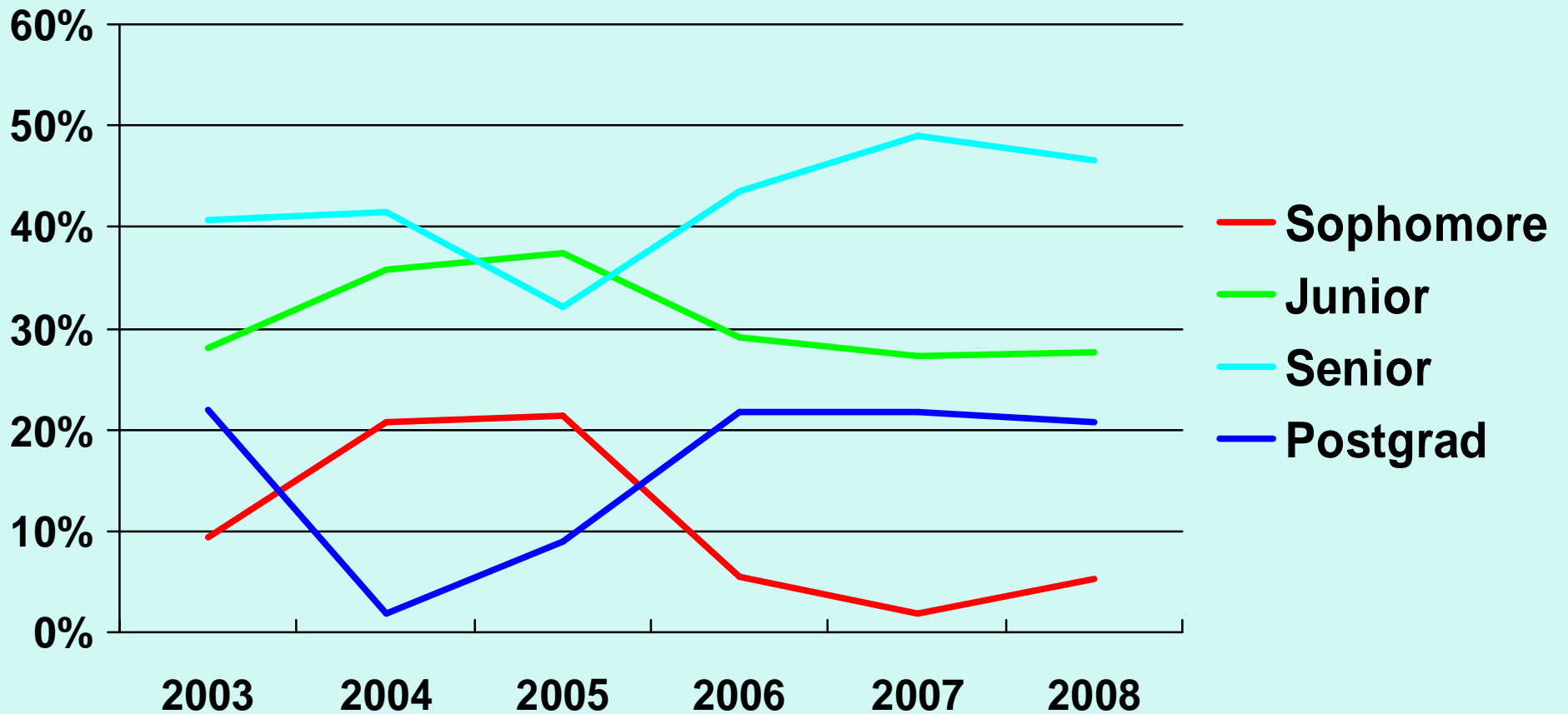


Gender



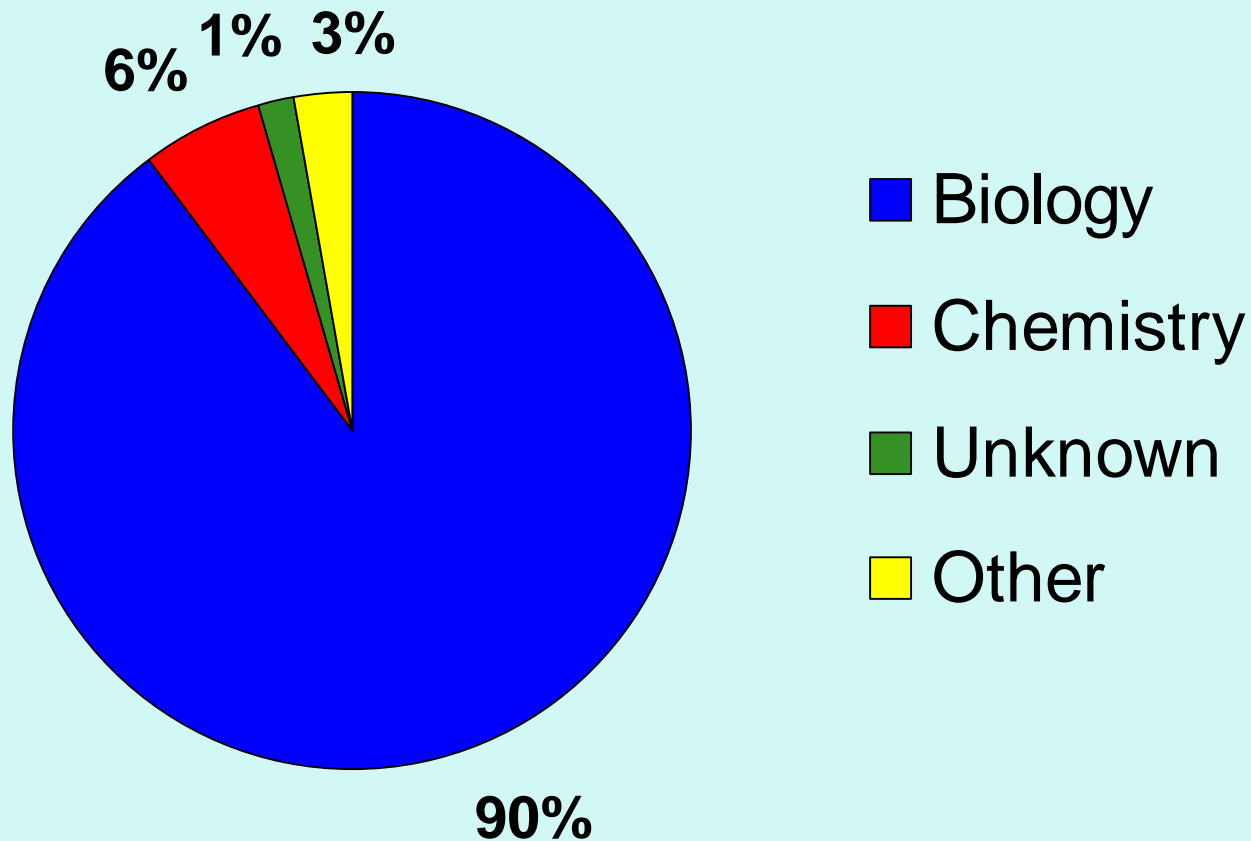


Class Standing



Class indicates year student will be entering after summer EXROP experience.

Majors (2004-2008)



Bachelor Degree Status/Major was not collected for 2003 EXROP Program.



Outcomes: 150 Graduates

